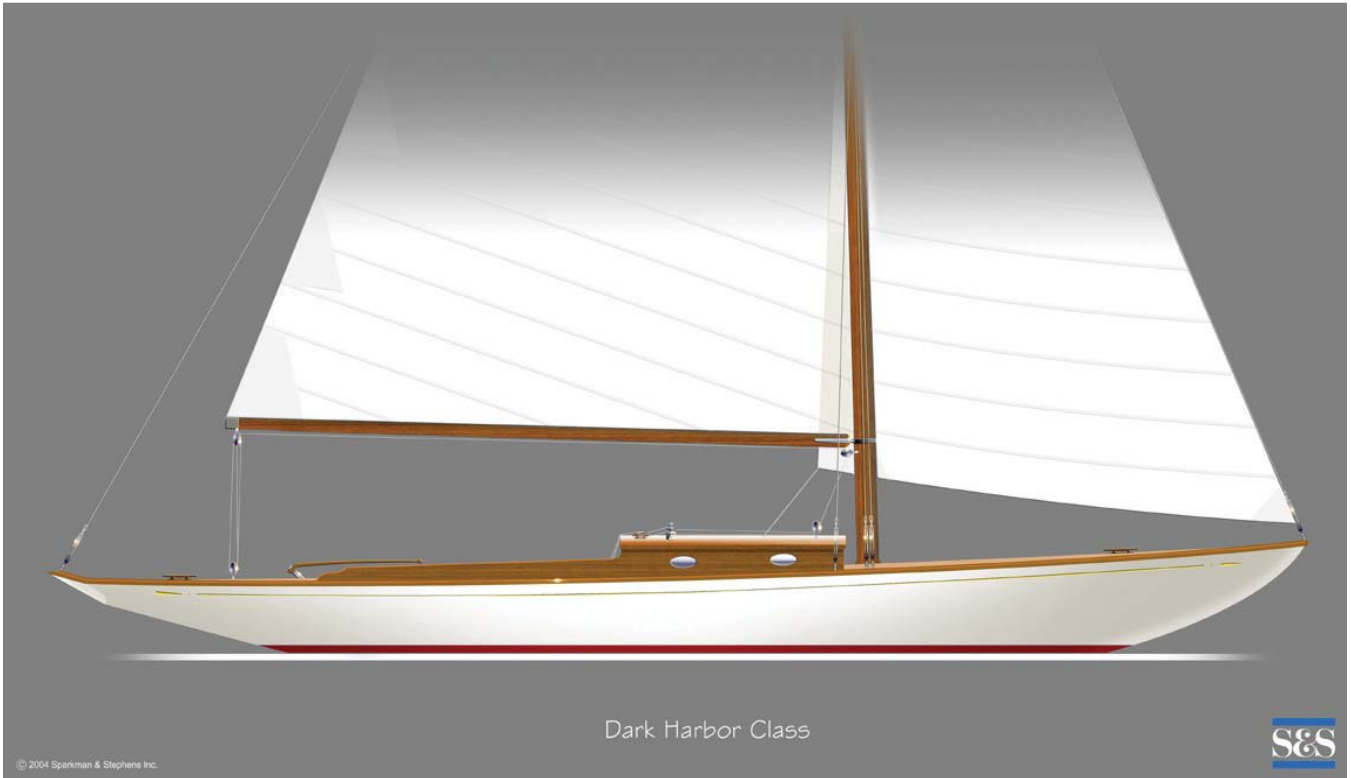


DARK HARBOR 20



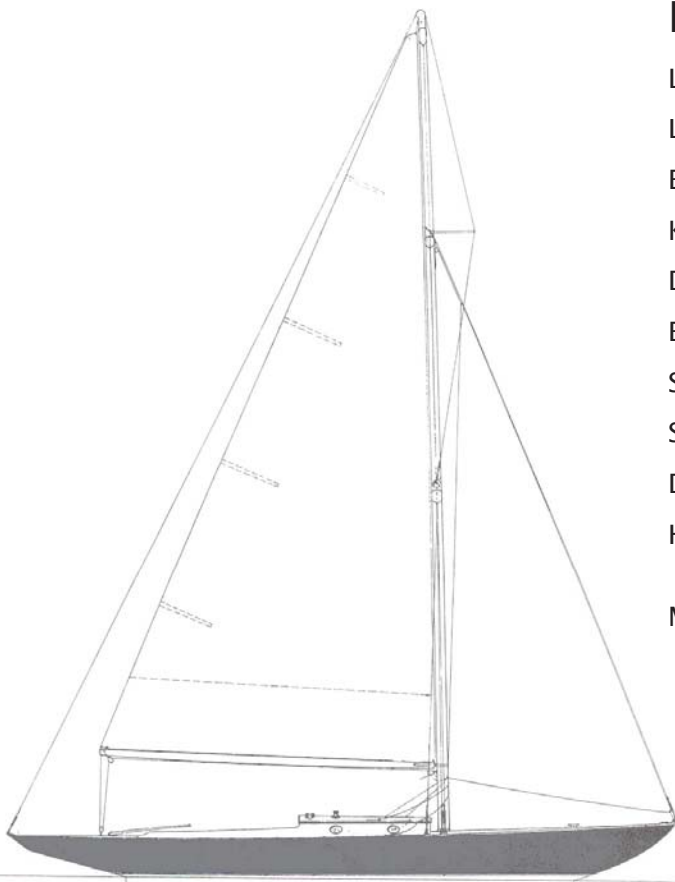
Dark Harbor Class

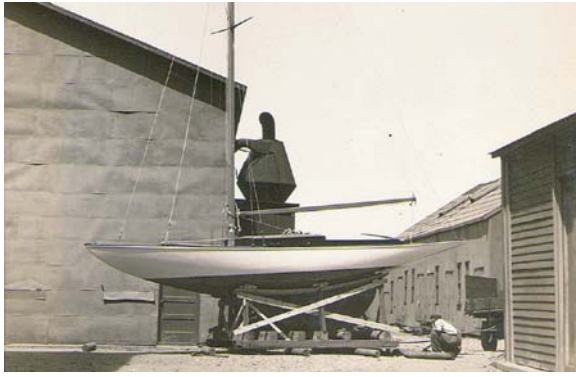


© 2004 Sparkman & Stephens Inc.

Principal Dimensions

LOA:	30'-0"
LWL:	20'-0"
Beam:	6'- 8-1/2"
Keel Draft:	4'- 1-1/4"
Displacement:	5,200 lbs
Ballast:	2,620 lbs
Sail Area:	357 sqft
Sail Area/Displacement Ratio:	19.0
Displacement/Length Ratio:	290
Hull Construction:	Cored polyester composite
Mast & Rigging:	Spruce spars Stainless rigging



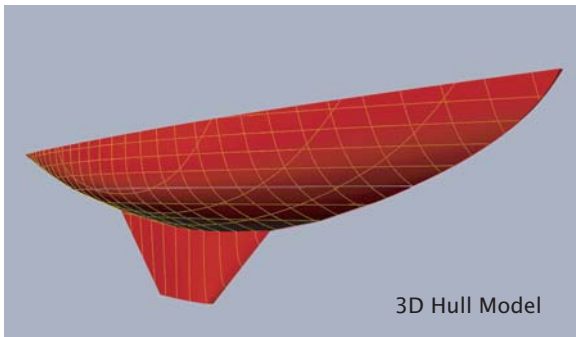


Designed in 1934, 21 plank-on-frame wooden DH20's were built in the first half of the 20th century. All but one still proudly sail today, a testament to good design, sound construction, and the dedication of the Tarratine Yacht Club of Dark Harbor members.



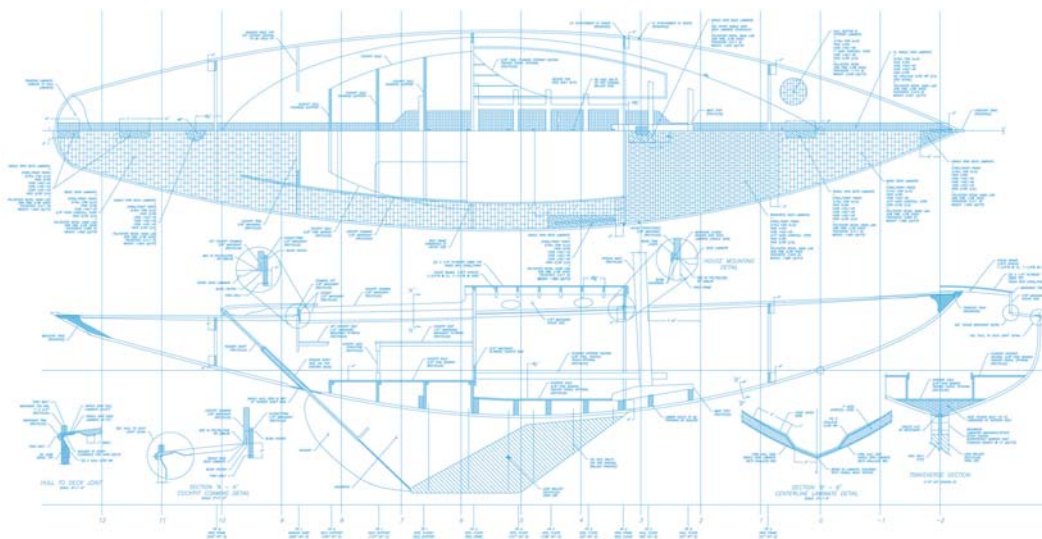
70 years later, S&S, the Tarratine Yacht Club, and Shaw Yacht of Thomaston, Maine, have collaborated to begin the construction of new, fiberglass DH20's.

To ensure that the new boats could compete on equal footing with the older boats, a group of five wooden boats were weighed and tested for stability. The new boats have been engineered to have the identical performance characteristics of the old boats, including the continued use of wooden mast and booms! The original hull shape has been accurately replicated in a 3D model, and will be used to computer generate the new hull molds.



The end result is a low maintenance, low cost opportunity to become a part of a truly esteemed sailing and racing class experience. In the words of Olin Stephens:

"They are nimble, exciting to race, and typically carry a crew of three in addition to the skipper. Displacement is light and beam is moderate towards narrow; the hull easily driven. Draft of the fin keel is also moderate. The fractional sloop rig seems suitably proportioned. The boats are also attractive in appearance, as would be expected of a class sailed in this stylish and long established enclave."



Contact us for more information and find out how you can become the owner of a piece of sailing history



SPARKMAN & STEPHENS, INC.
529 Fifth Avenue
New York, NY 10017
212-661-1240
design@sparkmanstephens.com
www.sparkmanstephens.com